

# Huge Rent Reduction Professional Office Suite - Bundall

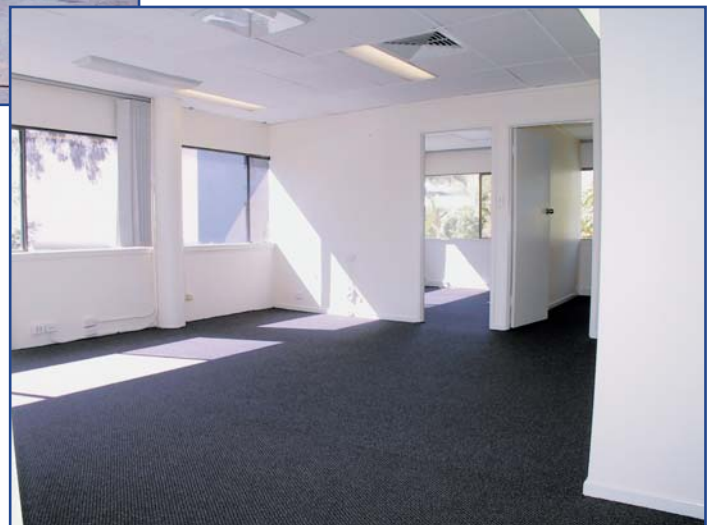


**Only \$1,950/mth  
(including outgoing + gst)**

**Area - 112m<sup>2</sup>  
(plus 2 carparks)**

## **Suite 9, Level 1 13 Karp Court, Bundall**

- Fully partitioned & ready to occupy
- Front north east corner
- Extensive natural light
- North, east & south windows



## **Well Presented & Airconditioned**

**view more at [www.robbyproperty.com](http://www.robbyproperty.com)**



Robbie & Associates  
Property Services

For enquiries, professional & confidential service  
**Phone Wayne Robbie on  
(07) 5592 3144 or 0419 772 867**

Level 3, 9 Beach Rd Surfers Paradise Qld 4217

